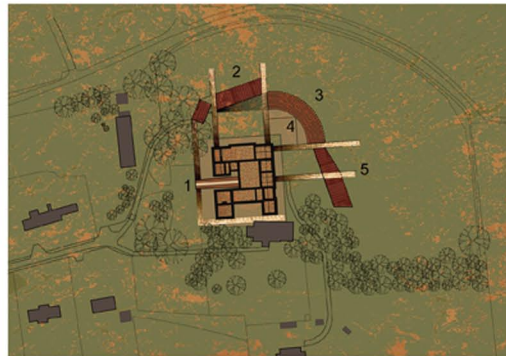


Pavilion of Post Contemporary Curating....

A Conceptual Exploration

The Concept of the Pavilion of Post Contemporary Curating is to exploit the unique spaces that can be found within the ruins of Sutton Scarsdale Hall whilst drawing on the detail and materiality of the remains.

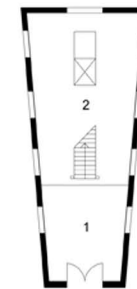
The concept is based on four separate buildings with a common language and physical relationship. The wedge shaped reception building plays on the perspective of the west wing and allows visitors to immediately connect with the setting, emphasising the subtle relationship between the proposed pavilion and the ruins of the hall. It provides visitors with the ability to experience art interventions and performances taking place within the old entrance hall. Visitors can enter the external viewing gallery on the second floor and take in the magnificence and splendour of the remains. The other accommodation is divided between three buildings which emerge from the landscape of the grounds and nestle in the undercarriage of the hall. The intention is to maximise views, maintain the presence of the hall and using a common language of materiality, provide a haven of contemplation and inspiration for the modern curator.



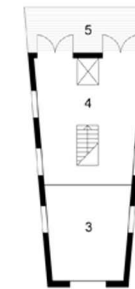
Site Plan

1. Reception Building
2. Studios
3. Library, Archive and Research
4. External Performance / Amphitheatre
5. Accommodation block

Ground Floor Plan



First Floor Plan



1. Reception
2. Bookshop
3. Void
4. Sutton Scarsdale Hall Exhibition
5. External Viewing Platform

Precedent Details



View from the East with Hall as backdrop



Reception Pavilion and Hall Exhibition

